

New Relief High School Boundary Scenarios

Ardrey Kell, Myers Park, and South Mecklenburg

November 22, 2022

Planning Services Department

Welcome

Objectives:

- Overview of past, ongoing and upcoming work
- Updated scenarios and associated data
- Your input



Student Assignment Policy S-ASGP



Board Requirement for Student Assignment

- contiguous boundaries

Board's Decision Matrix for School Boundary Decisions

- home to school distance
- intact feeder patterns
- socioeconomic diversity
- utilization

Board's Additional Factors for Consideration

- the feasibility of achieving the board's goals through other means, such as establishing partial magnet schools;
- keeping entire neighborhoods assigned to the same school;
- projections for population growth and demographic shifts;
- site limitations or legal restrictions that affect expansion capabilities;
- whether the school has been identified for capital improvements through bond or other funding.

Process for Engagement and Decision

New Relief High School Boundary

Superintendent, through his designees, gathers community input and feedback:

At least 3 engagement sessions:

- session 1 introduces the opportunity, seeks input from community on new boundary
- session 2 shares at least two draft boundary scenarios and seeks community feedback
- session 3 previews the superintendent's recommendation to the Board

Community input and feedback shared with the superintendent and Board:

- at least one public update to the Board during a regularly scheduled Board meeting
- at least one public hearing during a regularly scheduled Board meeting

Multiple inputs to the Superintendent's recommendation and Board's vote

- Policy S-ASGP
- community input
- achieving 2017 bond intent (i.e., high school relief)

Superintendent makes recommendation to the Board

Public hearing and Board decision

Change becomes effective

Planning & Engagement

- Meeting with Internal Team consisting of Learning Community Superintendents, Principals, and District Administration- ongoing
- Scheduling and facilitating parent work groups and conversations- ongoing
- Upcoming community sessions
- Upcoming interactive maps and surveys for feedback

Scenario Modeling Approach

March 1, 2022

- Community Session 1
- 6 CMS staff | 3 BOE members | 161 general public

March 25, 2022

- Crowd source mapping tool
2,976 views | 103 responses

April 1, 2022

- Initial parent interest meeting

April 7, 2022

- Community Session 2
10+ CMS staff | 180+ general public

Engagement

- Feedback from Board
- Feedback from Community via email and documented
- Feedback at Parent workgroup sessions (**April 19 & May 24**)
 - 4 subgroups
- **April 26, 2022:** Board Update

AK/MP/SM Relief High School



Continued Engagement & Next Steps Fall 2022

Community Outreach and Facilitation of Community Conversations	<ul style="list-style-type: none">• Ongoing -discussions with Internal Planning Team (Learning Community Superintendents, Principals, District Staff)• Aug 2022- Monthly Parent Workgroup Meetings begin• Aug- Dec 2022- Parent Workgroup researches urban planning, best practices, and supports small group sessions• Oct- Dec 2022- Small Group Sessions with Parents, Students, and Staff• In Process- Development of survey questions for work group, parents, schools, staff• In Process- Development of Q&A to address questions and concerns• Nov- Dec 2022- On-the-ground neighborhood evaluation• Early January 2023- In-person Public Engagement Session
Finalize Recommendation	Late January 2023
Public Hearing Board Vote	February 2023

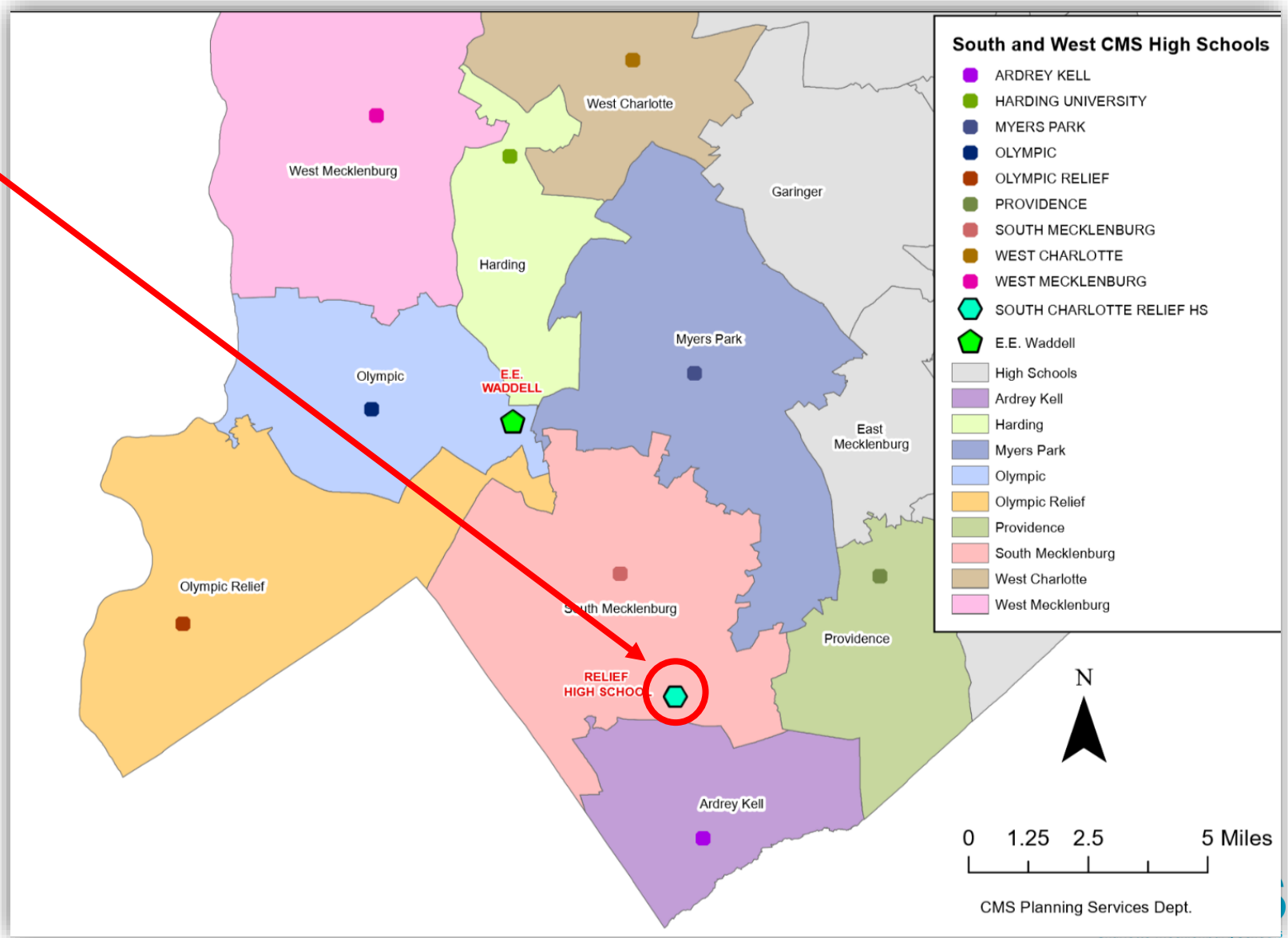
AK/MP/SM Relief High School

Scenario Development and Analysis

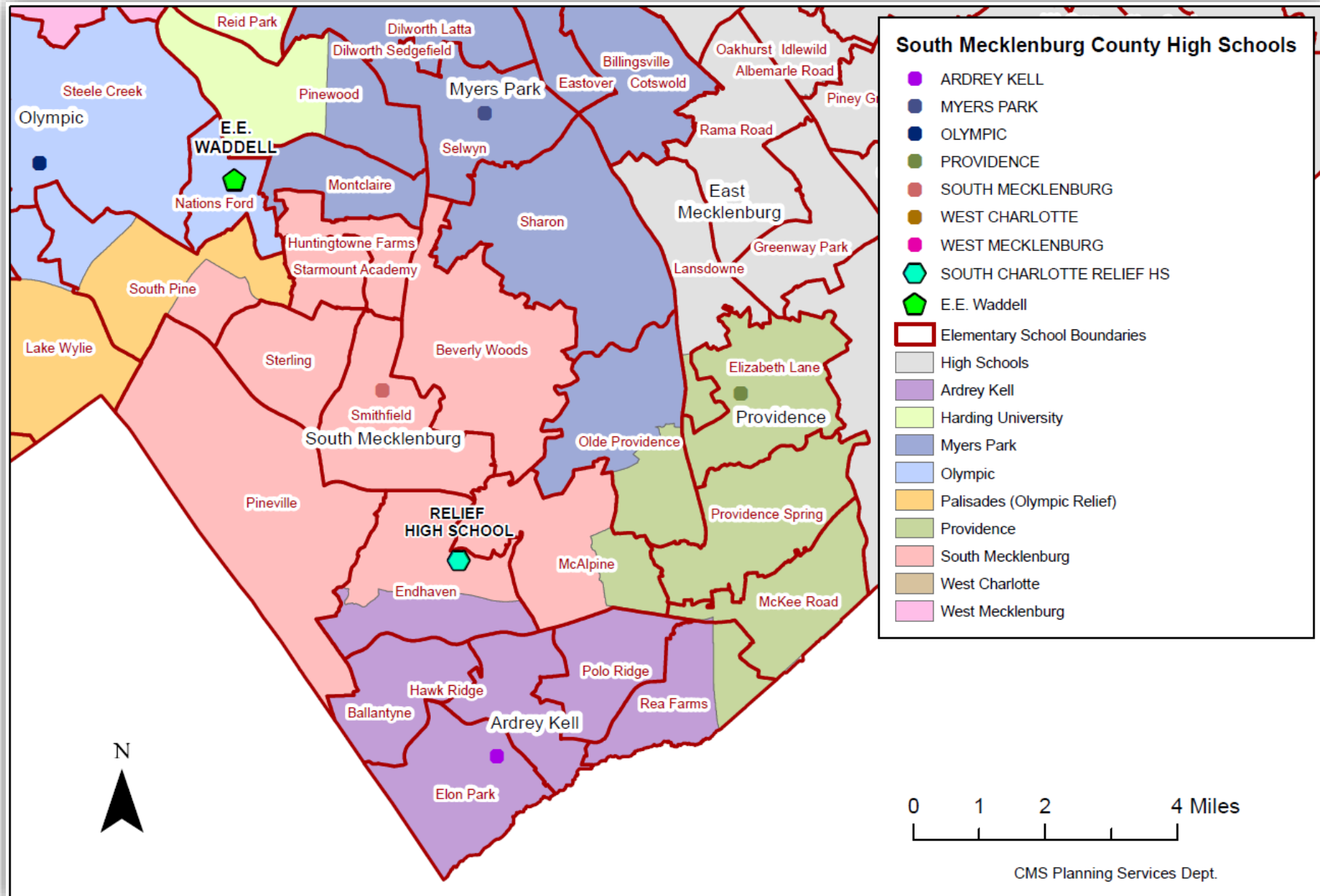
Scenario Development	<ul style="list-style-type: none">• Spring 2022- Scenarios developed for community feedback (<i>Purple, Pink</i>)• August 2022- Creation of two additional scenarios built upon the previous scenarios (<i>Blue, Green</i>)• Sept 2022- After review and feedback from parent workgroup, Planning created 3 additional scenarios for review by internal team and parent workgroup (<i>Orange, Yellow, Violet</i>)• Sept 2022- Green scenario was combined with the blue scenario• Oct 2022- 4 scenario options presented to Internal Planning Team (<i>Blue, Orange, Yellow, Violet</i>)• Oct 2022- 4 scenario options presented to Parent Workgroup (<i>Blue, Orange, Yellow, Violet</i>)• Oct-Nov 2022 – 5 new scenario drafts based on feedback so far (Red A, Red B, Brown A, Brown B, Brown C)• Oct 2022-Jan 2023- Continue with scenario iterations and modification in accordance with board priorities, board policy, and community feedback
Analysis	<ul style="list-style-type: none">• Sept 2022- New student enrollment data processed for 2022-2023 school year at 20th day• Sept 2022- Began scenario development and analysis grounded in Board priorities• Sept-Oct- Calculated estimates for number of students impacted, utilization, feeder patterns, socioeconomics, and proximity for option scenarios• Oct 2022- Measured, analyzed, and presented outcomes for each scenario option• Oct-Dec 2022- Analyze community feedback
Additional Considerations	<ul style="list-style-type: none">• Urban planning & development (permits, proposals, land use changes, transportation)• Program or pathway offerings at current high schools (magnet programs, CTE, etc)• Learning from others who have recently opened high schools

South Charlotte Relief High School

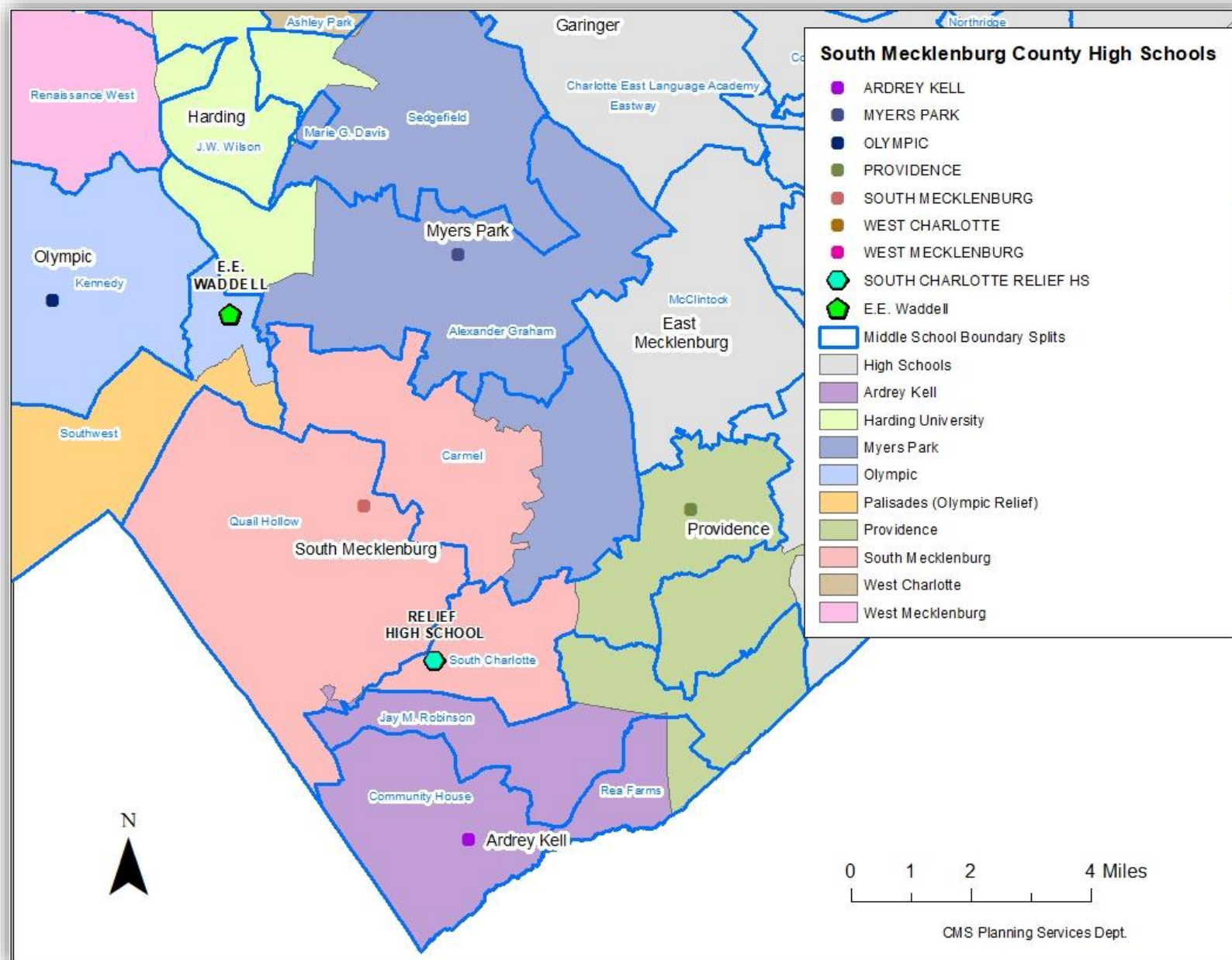
- New 100 classroom high school located at 12218 North Community House Road.
- Relieves overcrowding at Ardrey Kell, South Mecklenburg and Myers Park high schools



High School by Elementary Attendance Area



High School by Middle School Attendance Area



Current School Data for AK/MP/PR/SM: Enrollment



School	Number of Classrooms	Number of Mobile Units	2021-22 Enrollment	2022-23 Enrollment	Estimated Student Capacity*	Current utilization rate
Ardrey Kell	96	22	3,494	3,543	2,500	142%
Myers Park	140	19	3,539	3,615	3,000	121%
South Mecklenburg	125	9	3,259	3,366	2,700	125%

*This estimate is based on various factors such as the number of available/anticipated classrooms, staff allotments, resources, school management, and district standards. This is adjusted from the original estimates shared to more closely reflect the environments at the schools.

The Board’s goal is to move towards 100-classroom, 2500 student high schools.

Current School Data for AK/MP/PR/SM:



Current Feeder Patterns

Summary of Feeder Patterns for High Schools in Impact Area			
Total Feeder Patterns	Count	Description	Improvement Indicator
ES to MS to HS	37	Total Number of Feeder Patterns	Decrease
MS to HS	15	Total Number of MS to HS Feeder Patterns	Decrease
Intact Feeder Patterns			
ES to MS to HS intact	19	Count of Intact Feeder Patterns	Increase
MS to HS intact	3	Count of Intact Feeder Patterns from MS to HS	Increase

Current Feeder Patterns

	2023-2024 ES	2023-2024 MS	2023-2024 HS	Est Student Count	ES to MS to HS Intact
1	Ballantyne	Community House	Ardrey Kell	509	1
2	Beverly Woods	Carmel	South Mecklenburg	402	1
3	Billingsville Cotswold	Alexander Graham	Myers Park	651	1
4	Dilworth (Sedgefield-Latta)	Sedgefield	Myers Park	523	1
5	Eastover	Sedgefield	Myers Park	274	1
6	Elizabeth Lane	South Charlotte	Providence	621	1
7	Elon Park	Community House	Ardrey Kell	608	1
8	Endhaven	Jay M Robinson	Ardrey Kell	238	
9		Quail Hollow	South Mecklenburg	150	
10		South Charlotte	South Mecklenburg	78	
11	First Ward Creative Arts	Sedgefield	Myers Park	156	1
12	Hawk Ridge	Community House	Ardrey Kell	242	
13		Jay M Robinson	Ardrey Kell	226	
14	Huntingtowne Farms	Carmel	South Mecklenburg	359	1
15	Marie G Davis	Marie G Davis	Myers Park	100	1
16	McAlpine	Jay M Robinson	Providence	167	
17		South Charlotte	South Mecklenburg	236	
18	McKee Rd	Jay M Robinson	Providence	527	1
19	Montclair	Alexander Graham	Myers Park	364	1
20	New ES South	Community House	Ardrey Kell	810	1
21	Olde Providence	Carmel	Myers Park	368	
22		South Charlotte	Providence	160	
23	Pineville	Quail Hollow	South Mecklenburg	658	1
24	Pinewood	Alexander Graham	Harding	228	
25			Myers Park	221	
26	Polo Ridge	Jay M Robinson	Ardrey Kell	636	1
27	Rea Farms K8	Rea Farms K8	Ardrey Kell	307	
28			Providence	38	
29	Selwyn	Alexander Graham	Myers Park	468	1
30	Sharon	Alexander Graham	Myers Park	320	
31		Carmel	Myers Park	243	
32	Smithfield	Quail Hollow	South Mecklenburg	487	1
33	South Pine	Kennedy	Olympic	108	
34		Quail Hollow	South Mecklenburg	72	
35		Southwest	Palisades	359	
36	Starmount Academy	Carmel	South Mecklenburg	332	1
37	Sterling	Quail Hollow	South Mecklenburg	478	1

Current School Data for AK/MP/PR/SM: SES and Proximity



Socioeconomic Status (SES)*			
Schools	High SES	Mid SES	Low SES
Ardrey Kell	78%	21%	1%
Myers Park	56%	25%	19%
South Mecklenburg (incl. language magnet students)	28%	25%	46%

* SES is an index measure based on family income, adult educational attainment, homeownership, household composition, and English language ability (Source: US Census Bureau American Community Survey, 5YR Estimates, Vintage 2020).

Proximity Analysis	<u>Travel Time (in minutes by car)</u>			<u>Travel Distance (in miles)</u>		
	Min	Max	Mean	Min	Max	Mean
Ardrey Kell	1.3	12.6	6.1	0.3	5.3	2.5
Myers Park	2.9	16.4	9.9	0.6	8.4	3.7
South Mecklenburg	1.9	15.7	8.1	0.5	8.3	3.4

Latest DRAFT iterations

These have been created based on your feedback of Blue, Orange, Yellow, and Violet. We request your feedback on them to help us narrow down to around 3 to present for public feedback late November/early December 2022.

RED A Scenario

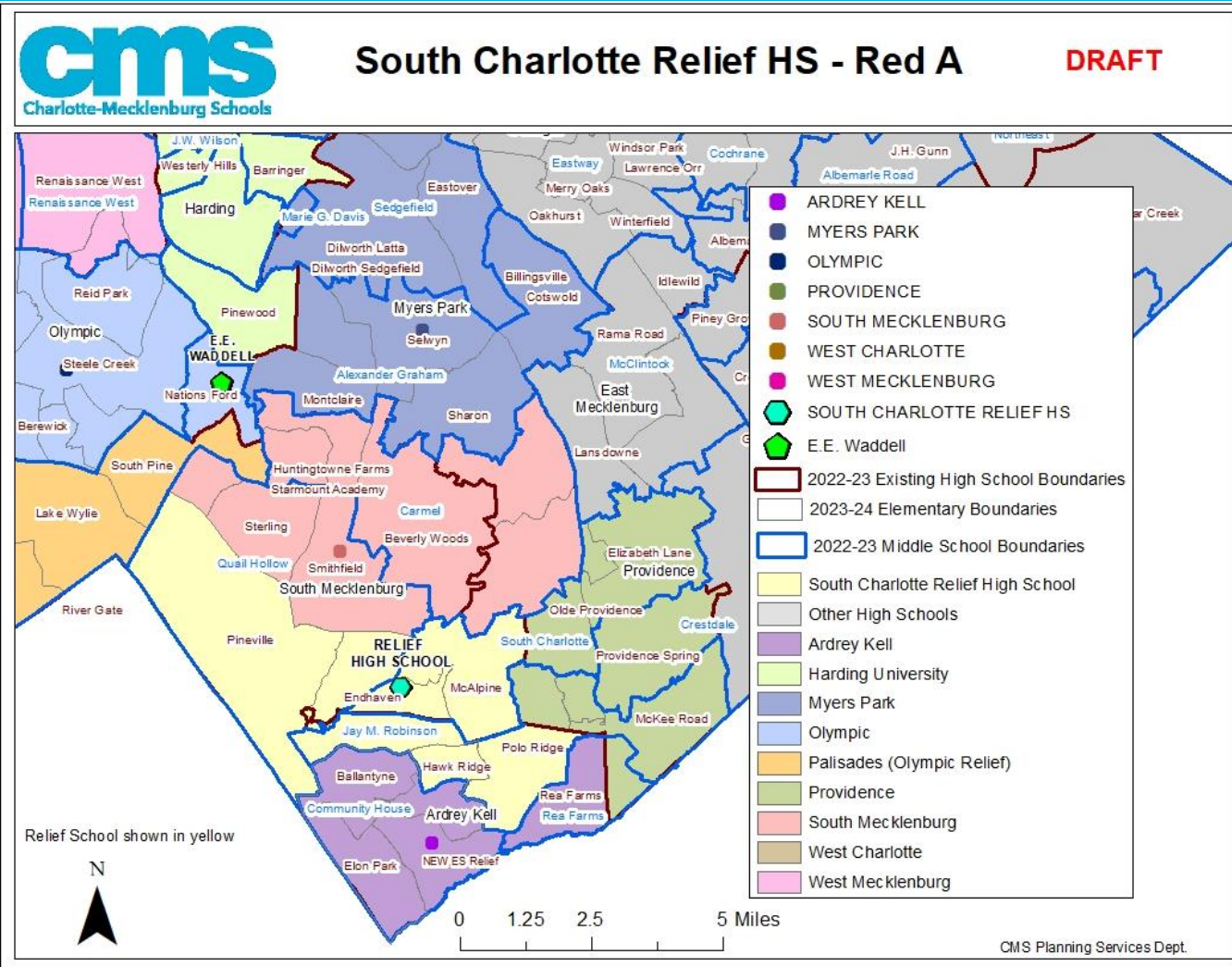
Impact, Enrollment, SES



Number of Students Impacted (Y1) 2133

School	2022-23 20th Day Enrollment	2021-22 Capacity Utilization	RED A Estimated Enrollment (Y2)	RED A Planning Capacity (Y2)
Ardrey Kell	3557	142%	2509	100%
Myers Park	3615	121%	3027	101%
South Mecklenburg	3366	125%	2917	108%
Relief HS	N/A	N/A	2052	82%

School	HIGH SES	MID SES	LOW SES	HIGH SES	MID SES	LOW SES
Ardrey Kell	78%	21%	1%	73%	25%	2%
Myers Park	56%	25%	19%	50%	28%	22%
South Mecklenburg	28%	25%	46%	48%	10%	43%
Relief HS	N/A	N/A	N/A	56%	29%	15%



RED A Scenario

Feeders

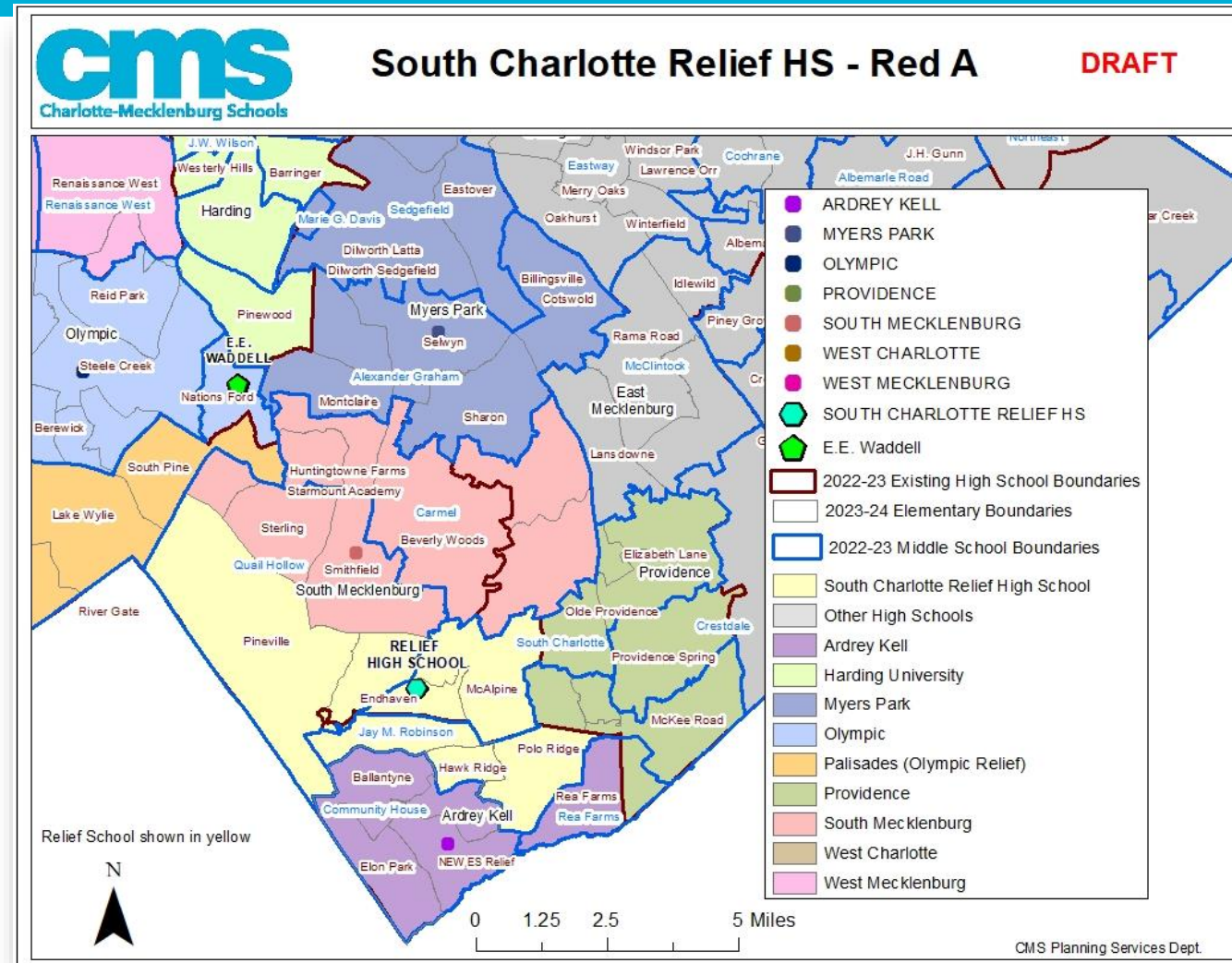
Number of Students Impacted (Y1)

2133

Feeder changes:

- All of Carmel MS goes to South Meck HS
 - i.e., the southern section of Sharon ES and the northern section of Olde Providence ES are reassigned from Myers Park to South Meck.
- All of Pineville ES, Endhaven ES, McAlpine ES and Polo Ridge ES, and the northern part of Hawk Ridge (that goes to JM Robinson MS) to the relief HS
 - i.e., the southern section of Endhaven, the northern section of Hawk Ridge, and Polo Ridge (they currently all go to JM Robinson MS) are reassigned from Ardrey Kell to the relief HS.
 - Pineville, McAlpine, and the northern section of Endhaven are reassigned from South Meck to the relief HS.

Providence HS boundary stays the same.



RED B Scenario

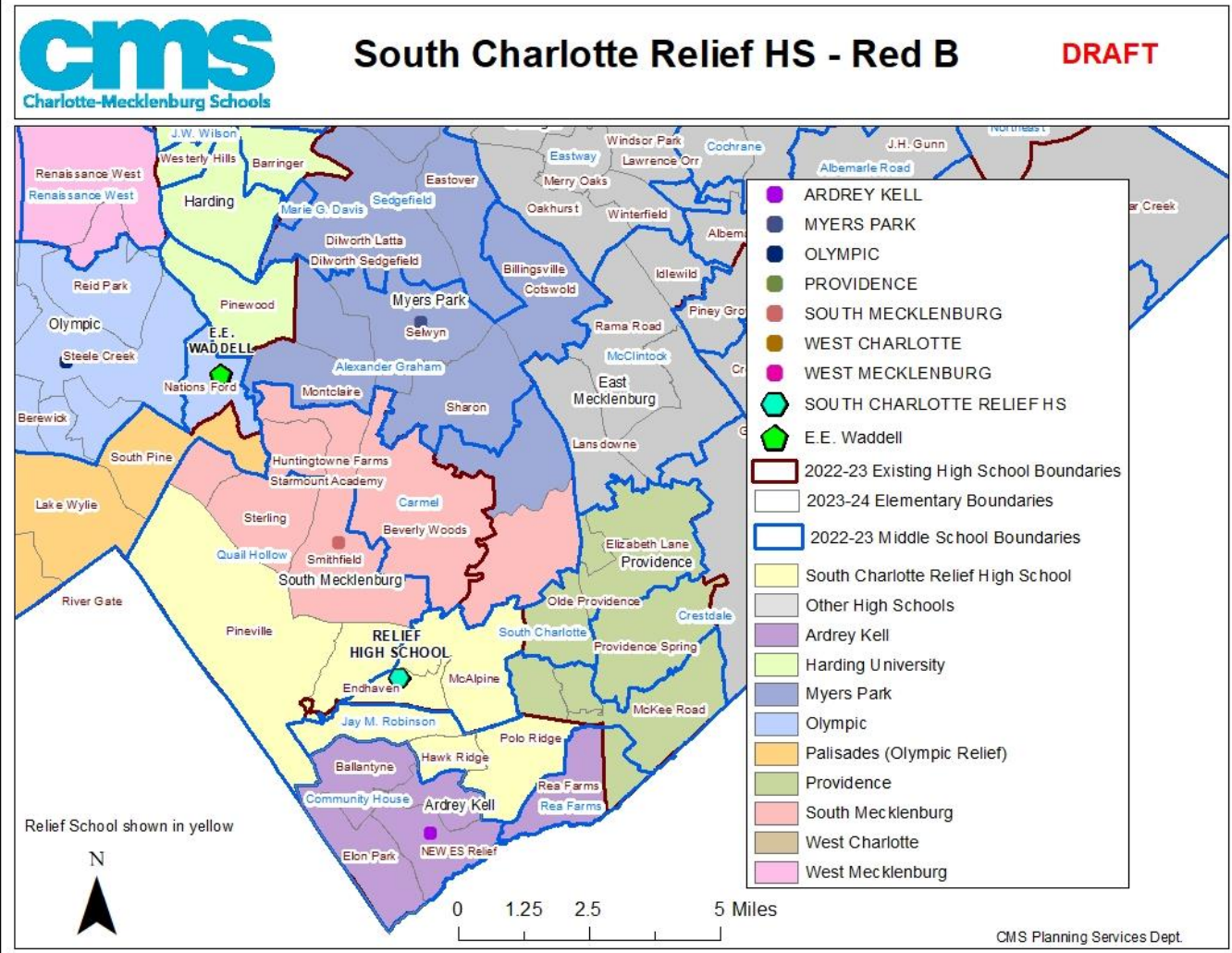
Impact, Enrollment, SES



Number of Students Impacted (Y1) 1943

School	2022-23 20th Day Enrollment	2021-22 Capacity Utilization	RED B Estimated Enrollment (Y2)	RED B Planning Capacity (Y2)
Ardrey Kell	3557	142%	2509	100%
Myers Park	3615	121%	3244	108%
South Mecklenburg	3366	125%	2700	100%
Relief HS	N/A	N/A	2052	82%

School	HIGH SES	MID SES	LOW SES	HIGH SES	MID SES	LOW SES
Ardrey Kell	78%	21%	1%	73%	25%	2%
Myers Park	56%	25%	19%	53%	26%	21%
South Mecklenburg	30%	23%	47%	42%	11%	47%
Relief HS	N/A	N/A	N/A	56%	29%	15%

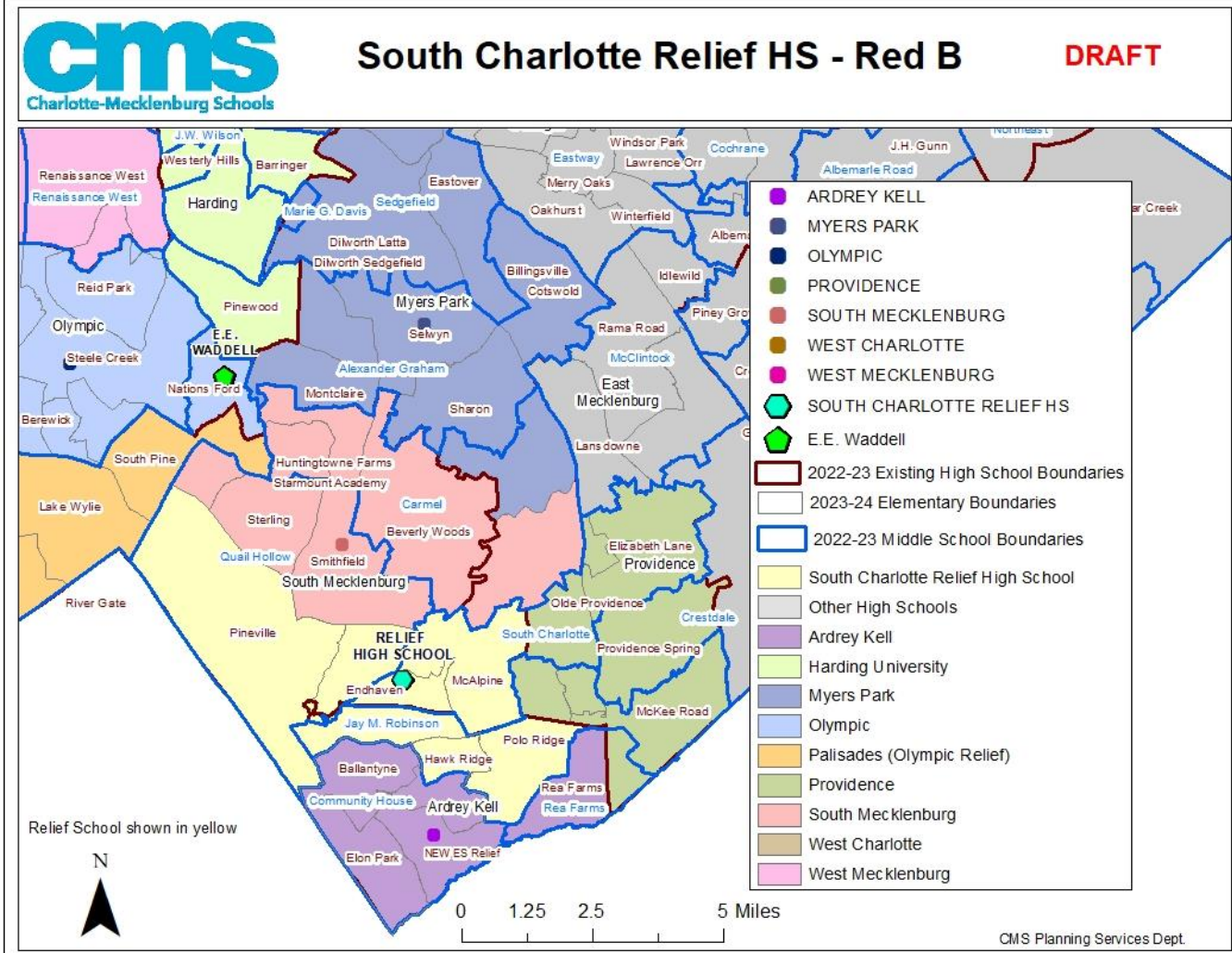


RED B Scenario

Feeders



The only difference between Red A and Red B is that, in Red B, the southern section of Sharon ES stays zoned for Myers Park. (maintains split with some Sharon ES students going to Carmel MS and others going to Alexander Graham)



BROWN A Scenario

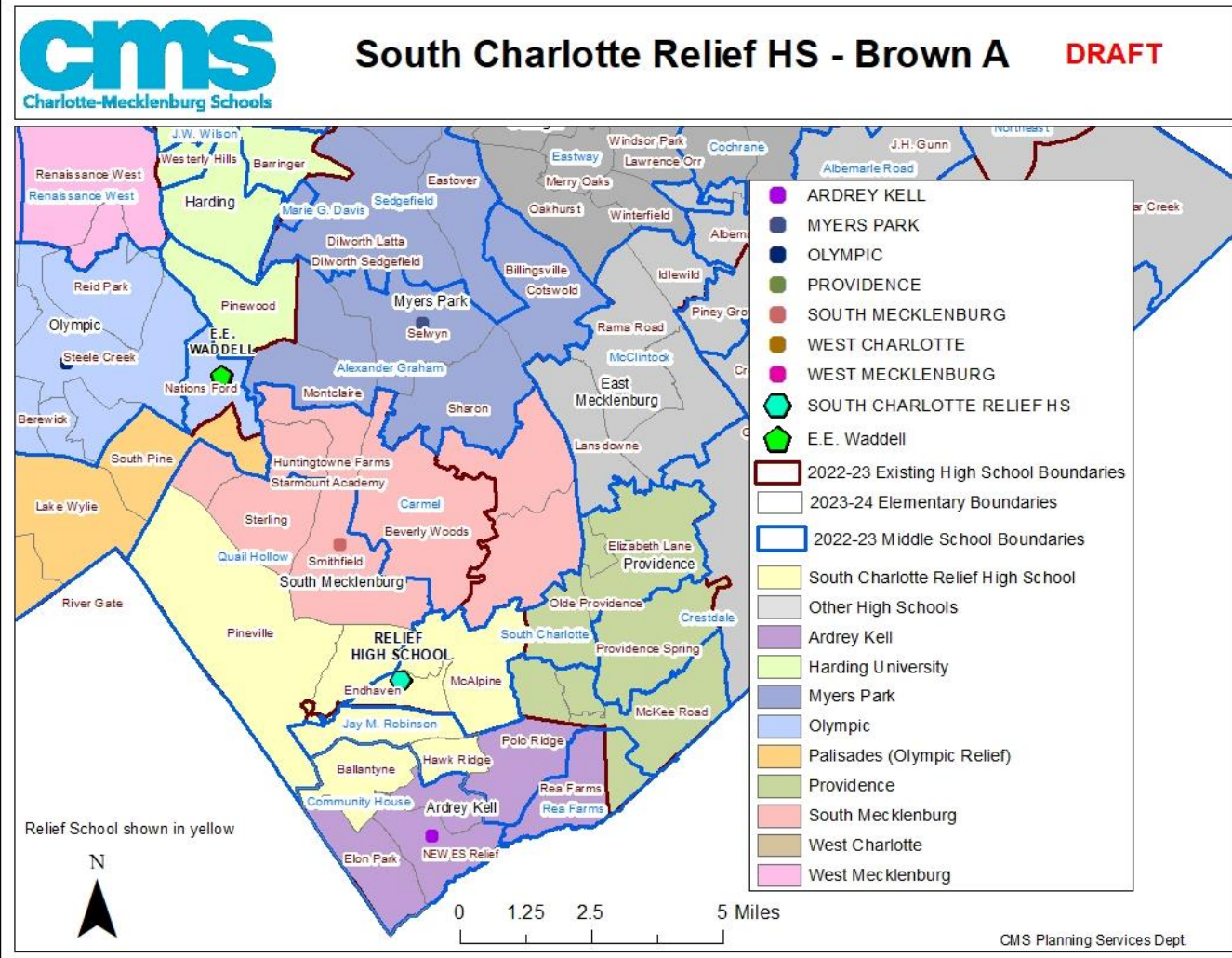
Impact, Enrollment, SES



Number of Students Impacted (Y1) 2063

School	2022-23 20th Day Enrollment	2021-22 Capacity Utilization	BROWN A Estimated Enrollment (Y2)	BROWN A Planning Capacity (Y2)
Ardrey Kell	3557	142%	2592	104%
Myers Park	3615	121%	3027	101%
South Mecklenburg	3366	125%	2917	108%
Relief HS	N/A	N/A	1969	79%

School	HIGH SES	MID SES	LOW SES	HIGH SES	MID SES	LOW SES
Ardrey Kell	78%	21%	1%	83%	17%	0%
Myers Park	56%	25%	19%	50%	28%	22%
South Mecklenburg	30%	23%	47%	48%	10%	43%
Relief HS	N/A	N/A	N/A	42%	40%	18%



BROWN A Scenario

Feeders

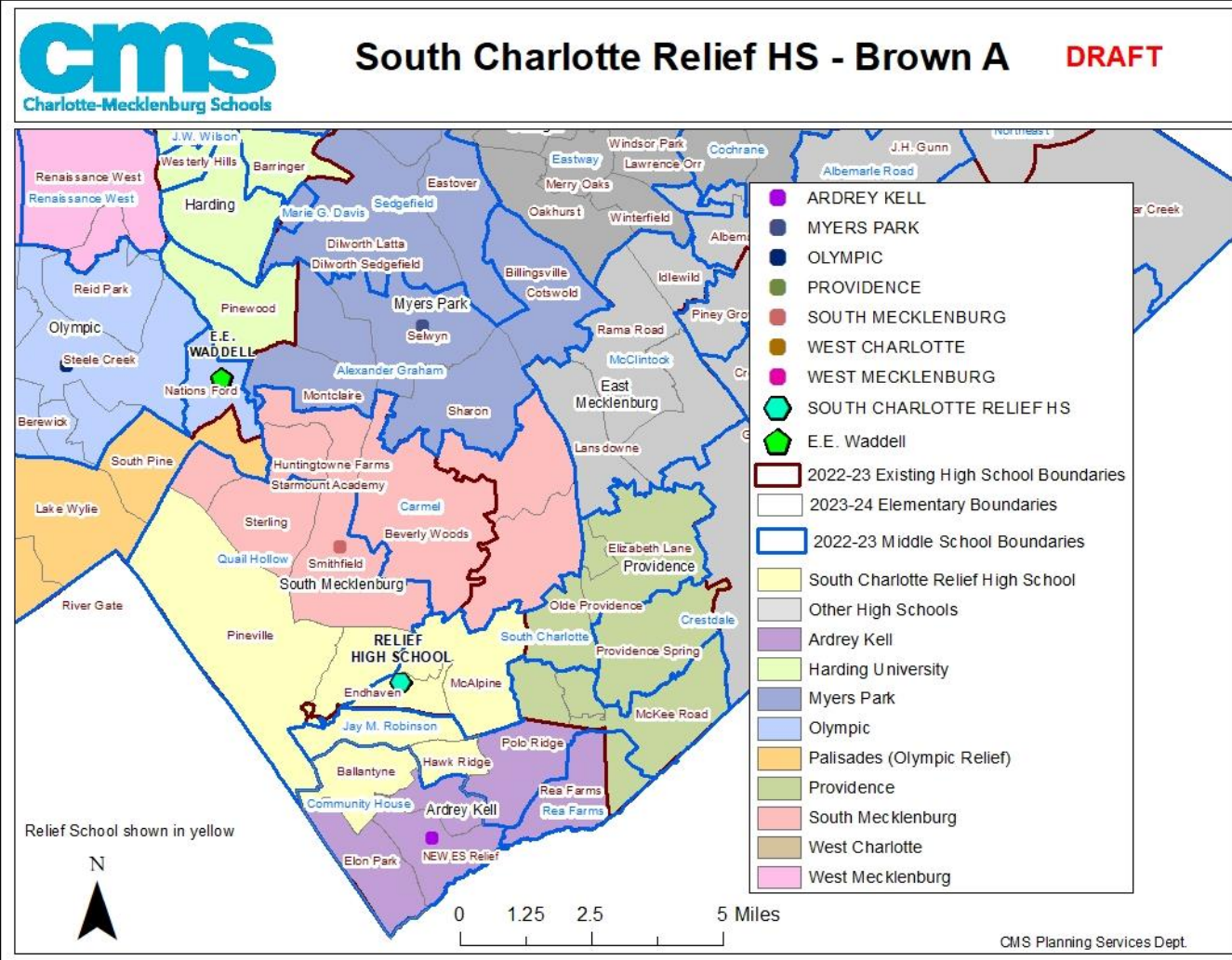


Number of Students Impacted (Y1)	2063
----------------------------------	------

Feeder changes:

- All of Carmel MS goes to South Meck HS
 - i.e. the southern section of Sharon ES and the northern section of Olde Providence ES are reassigned from Myers Park to South Meck.
- New Ballantyne (2023-24), the northern section of Hawk Ridge, Pineville, Endhaven, and McAlpine go to the relief HS.
 - i.e. new Ballantyne, the southern section of Endhaven and the northern section of Hawk Ridge are reassigned from Ardrey Kell to the relief HS
 - Pineville, the northern section of Endhaven, and McAlpine are reassigned from South Meck to the relief HS.

Providence HS boundary stays the same.



BROWN B Scenario

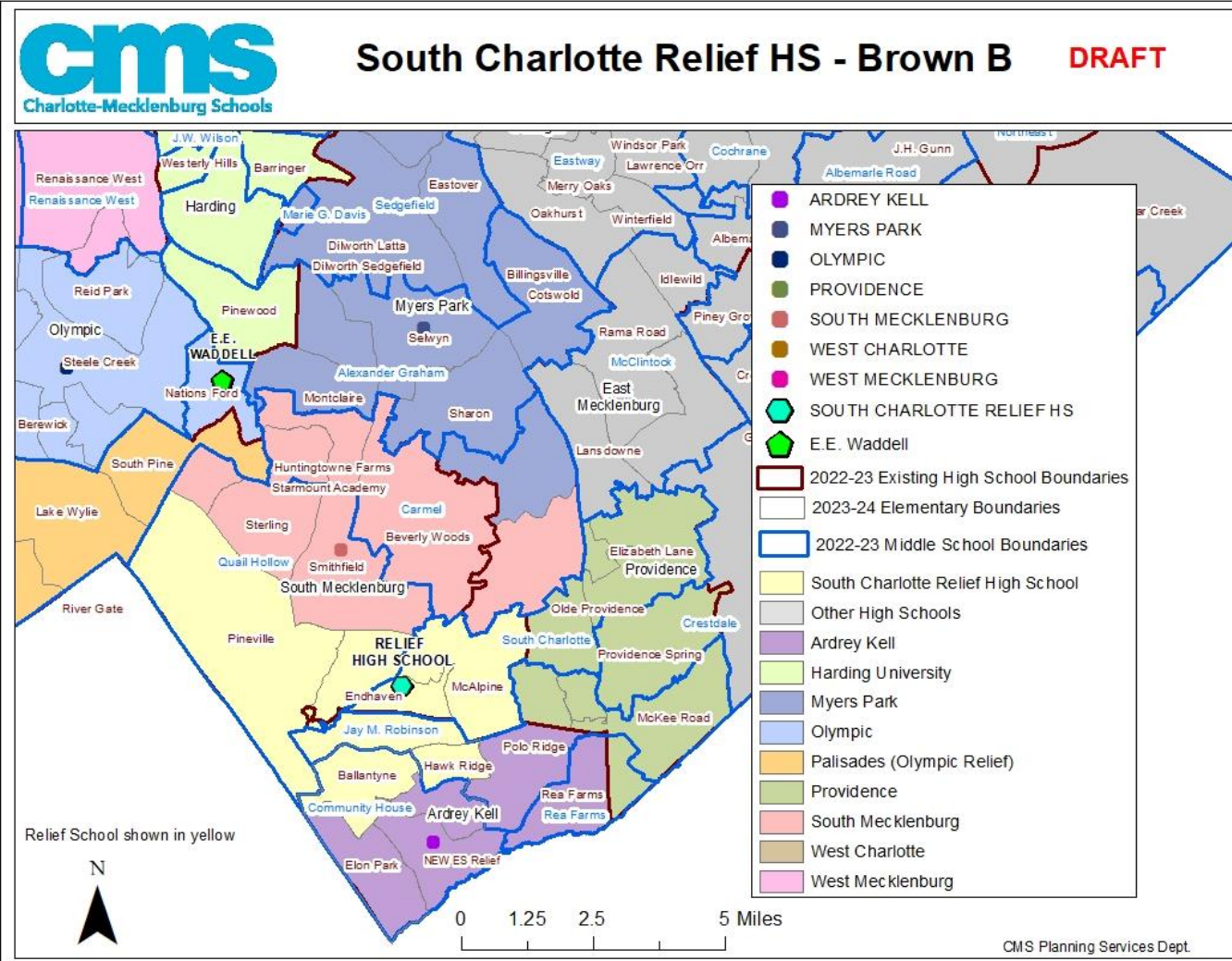
Impact, Enrollment, SES



Number of Students Impacted (Y1) 1873

School	2022-23 20th Day Enrollment	2021-22 Capacity Utilization	BROWN B Estimated Enrollment (Y2)	BROWN B Planning Capacity (Y2)
Ardrey Kell	3557	142%	2592	104%
Myers Park	3615	121%	3244	108%
South Mecklenburg	3366	125%	2700	100%
Relief HS	N/A	N/A	1969	79%

School	HIGH SES	MID SES	LOW SES	HIGH SES	MID SES	LOW SES
Ardrey Kell	78%	21%	1%	83%	17%	0%
Myers Park	56%	25%	19%	53%	26%	21%
South Mecklenburg	30%	23%	47%	42%	11%	47%
Relief HS	N/A	N/A	N/A	42%	40%	18%



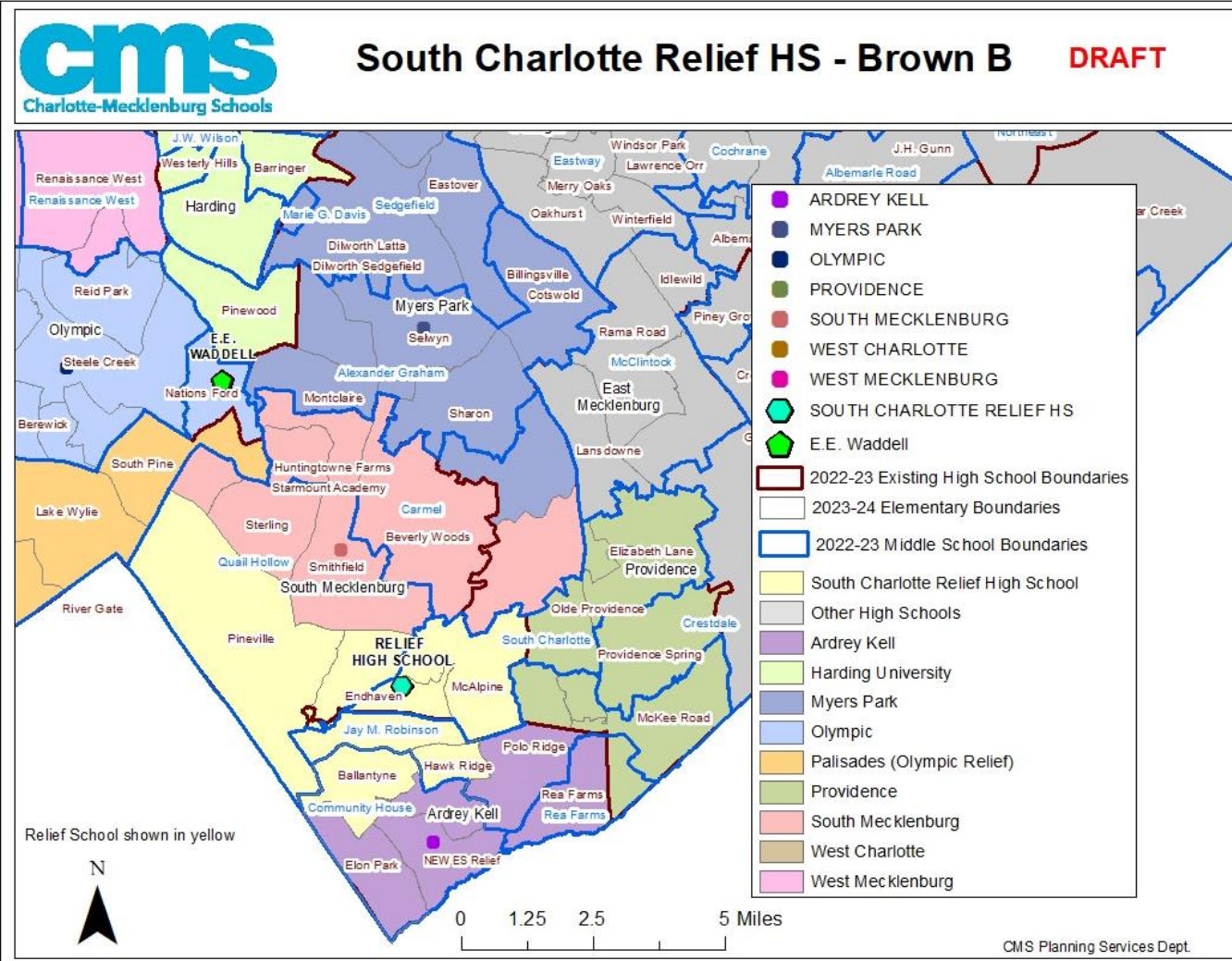
BROWN B Scenario

Feeders



Number of Students Impacted (Y1)	1873
----------------------------------	------

The only difference between Brown A and Brown B is that, in Brown B, the southern section of Sharon ES stays zoned for Myers Park.
 (maintains split with some Sharon ES students going to Carmel MS and others going to Alexander Graham)



BROWN C Scenario

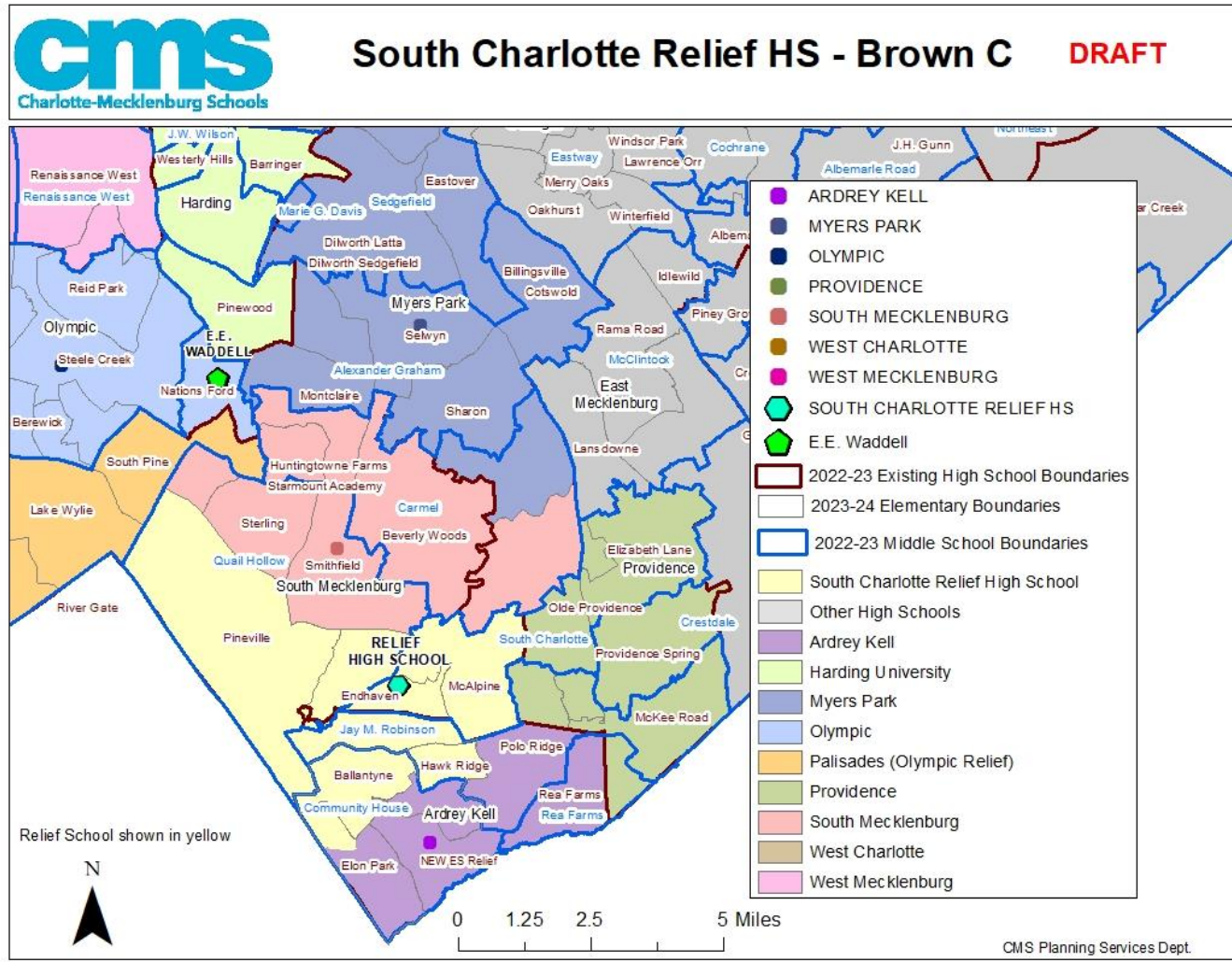
Impact, Enrollment, SES



Number of Students Impacted (Y1) 2090

School	2022-23 20th Day Enrollment	2021-22 Capacity Utilization	BROWN C Estimated Enrollment (Y2)	BROWN C Planning Capacity (Y2)
Ardrey Kell	3557	142%	2327	93%
Myers Park	3615	121%	3244	108%
South Mecklenburg	3366	125%	2700	100%
Relief HS	N/A	N/A	2234	89%

School	HIGH SES	MID SES	LOW SES	HIGH SES	MID SES	LOW SES
Ardrey Kell	78%	21%	1%	81%	19%	0%
Myers Park	56%	25%	19%	53%	26%	21%
South Mecklenburg	30%	23%	47%	42%	11%	47%
Relief HS	N/A	N/A	N/A	49%	35%	16%



BROWN C Scenario

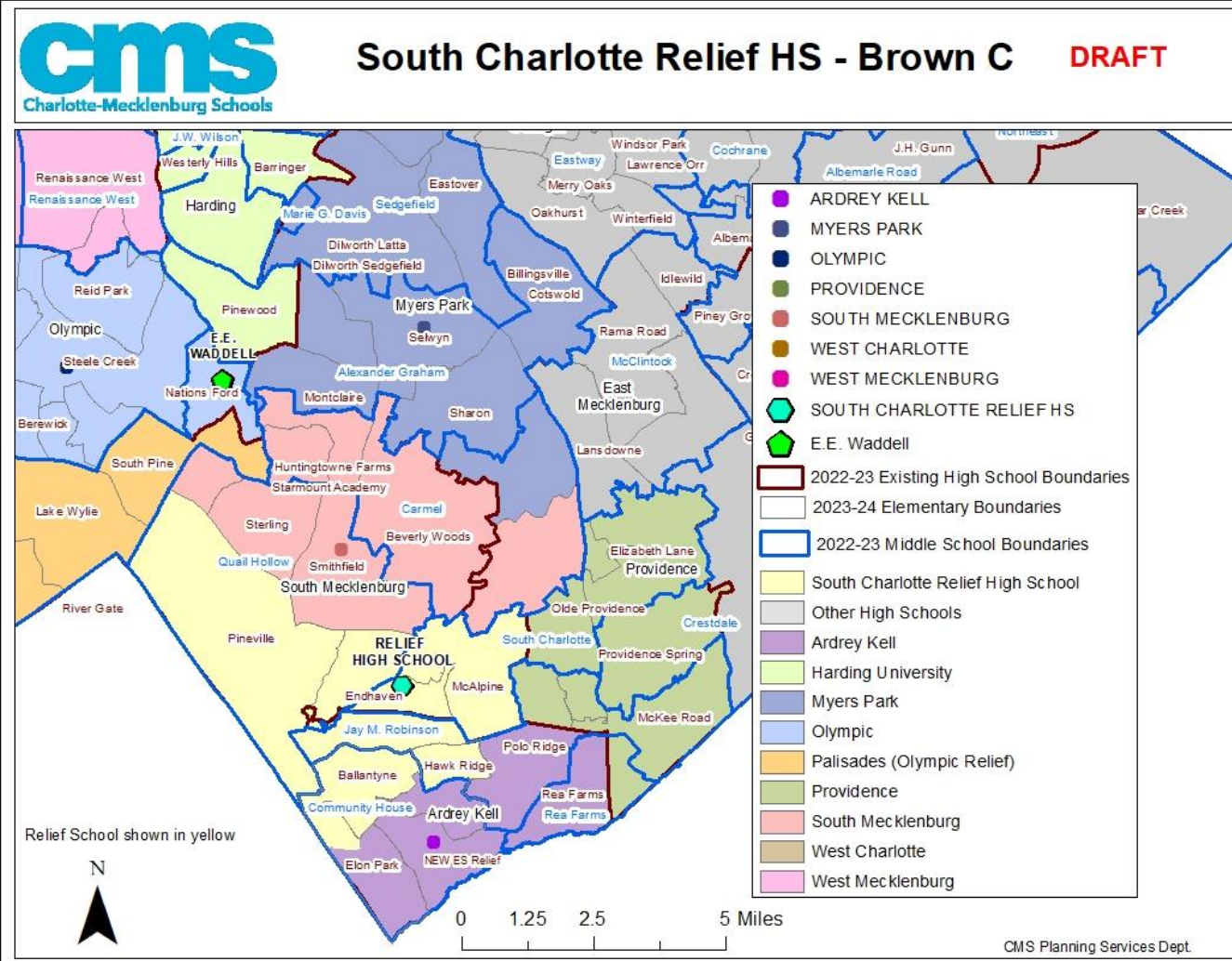
Feeders



Number of Students Impacted (Y1)	2090
----------------------------------	------

The only difference between Brown B and Brown C is that Brown C uses the current Ballantyne ES boundary and reassigns that area from Ardrey Kell to the relief HS to provide Ardrey Kell with additional relief.

i.e., the northern section of the new Elon Park boundary would go to the relief HS (both Elon Park and Ballantyne would still go to Community House together)



Comparing Results:

Red A & B, Brown A, B & C Scenarios

Estimated Enrollment/Capacity (Y2)



Estimated number of students impacted during the first year:

RED A	RED B	BROWN A	BROWN B	BROWN C
2133	1943	2063	1873	2090

Estimated Enrollment and Utilization (Y2)

Schools	2022-2023 M1 Enrollment	RED_A (Estimated Enrollment) with Magnet/Transfers	RED_B (Estimated Enrollment) with Magnet/Transfers	BROWN_A (Estimated Enrollment) with Magnet/Transfers	BROWN_B (Estimated Enrollment) with Magnet/Transfers	BROWN_C (Estimated Enrollment) with Magnet/Transfers
Ardrey Kell	3529	2509	2509	2592	2592	2327
Myers Park	3605	3027	3244	3027	3244	3244
South Meck	3362	2917	2700	2917	2700	2700
New Relief HS	N/A	2052	2052	1969	1969	2234

Schools	Planning Capacity	Current Utilization	RED_A (Estimated Utilization)	RED_B (Estimated Utilization)	BROWN_A (Estimated Utilization)	BROWN_B (Estimated Utilization)	BROWN_C (Estimated Utilization)
Ardrey Kell	2500	141%	100%	100%	104%	104%	93%
Myers Park	3000	120%	101%	108%	101%	108%	108%
South Meck	2700	125%	108%	100%	108%	100%	100%
New Relief HS	2500	n/a	82%	82%	79%	79%	89%

Socioeconomic Status



Estimated Socioeconomic Status by Option Scenario

School	CURRENT			RED A			RED B			BROWN A			BROWN B			BROWN C		
	HIGH	MID	LOW	HIGH	MID	LOW	HIGH	MID	LOW	HIGH	MID	LOW	HIGH	MID	LOW	HIGH	MID	LOW
Ardrey Kell	78%	21%	1%	73%	25%	2%	73%	25%	2%	83%	17%	0%	83%	17%	0%	81%	19%	0%
Myers Park	56%	25%	19%	50%	28%	22%	53%	26%	21%	50%	28%	22%	53%	26%	21%	53%	26%	21%
South Meck	28%	25%	46%	48%	10%	43%	42%	11%	47%	48%	10%	43%	42%	11%	47%	42%	11%	47%
New HS	-	-	-	56%	29%	15%	56%	29%	15%	42%	40%	18%	42%	40%	18%	49%	35%	16%
Area* Average	60%	23%	17%															
District Average	29%	34%	36%															

Source: 2022-23 SES distribution (20th-day student data)

Feeder Patterns

Feeders	Improvement Measure	Current	Red A	Red B	Brown A	Brown B	Brown C
Total Feeder Count							
ES to MS to HS	Decrease	37	37	37	37	37	38
MS to HS	Decrease	15	15	16	17	18	18
Intact Feeder Count							
ES to MS to HS	Increase	19	19	19	19	19	18
MS to HS	Increase	3	3	2	2	1	1

Home to School Distance

Average travel distance (miles)

	Current	Red A	Red B	Brown A	Brown B	Brown C
Ardrey Kell	2.5	2.2	2.2	2.3	2.3	2.2
Myers Park	3.7	3.3	3.5	3.3	3.5	3.5
South Meck	3.4	3.5	3.3	3.5	3.3	3.3
New HS	-	3.7	3.7	3.2	3.2	3.3

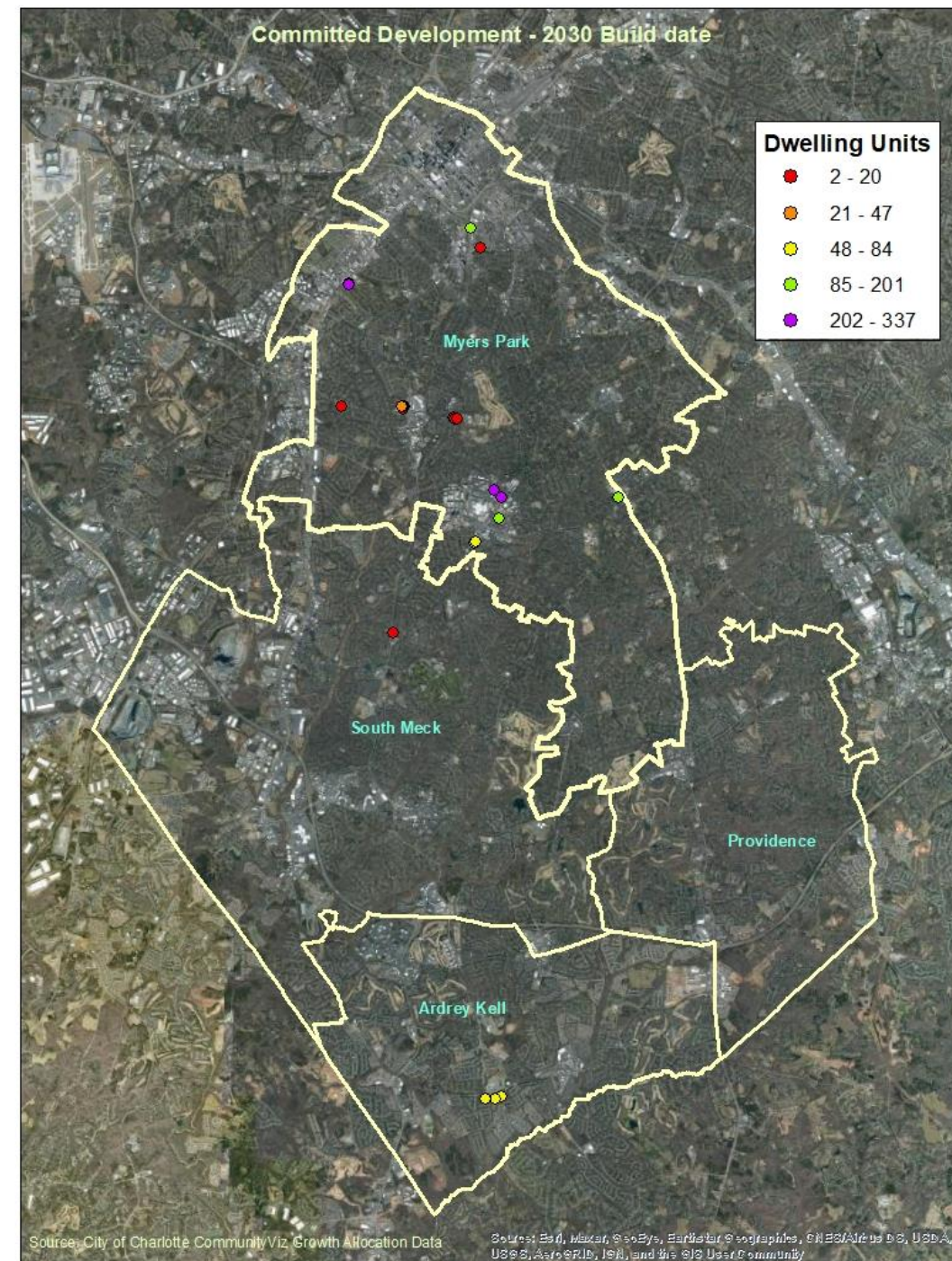
Other Considerations

- Magnet programs: Language Magnet at South Meck, IB at Myers Park
- Grade progressions – grade sizes in upcoming 5-10 years (current elementary and middle school students)
 - Larger cohorts in the pipeline for South Meck
 - Smaller cohorts for Ardrey Kell
 - Steady cohorts for Myers Park
- Anticipated student growth based on residential development (see next slides)

Committed Development – by 2030 Build date

Committed development: Lots or parcels that have been approved for development but not yet built in the region.

	Dwelling Units	ES	MS	HS	Total Students
Ardrey Kell					
SF Detached	16	4	2	4	10
SF Attached	204	31	13	24	68
Multifamily	NA	NA	NA	NA	NA
Myers Park					
SF Detached	10	3	1	1	5
SF Attached	48	1	1	1	3
Multifamily	2061	189	88	101	378
South Meck					
SF Detached	NA	NA	NA	NA	NA
SF Attached	20	3	1	2	6
Multifamily	NA	NA	NA	NA	NA



Source: 2019 City of Charlotte CommunityViz Growth Allocation data that was developed as part of the Charlotte Future 2040 Comprehensive Plan

Ballantyne Reimagined

Phase 1 (5-6 years from 2021)

Phase 2 (6-12 year Period)

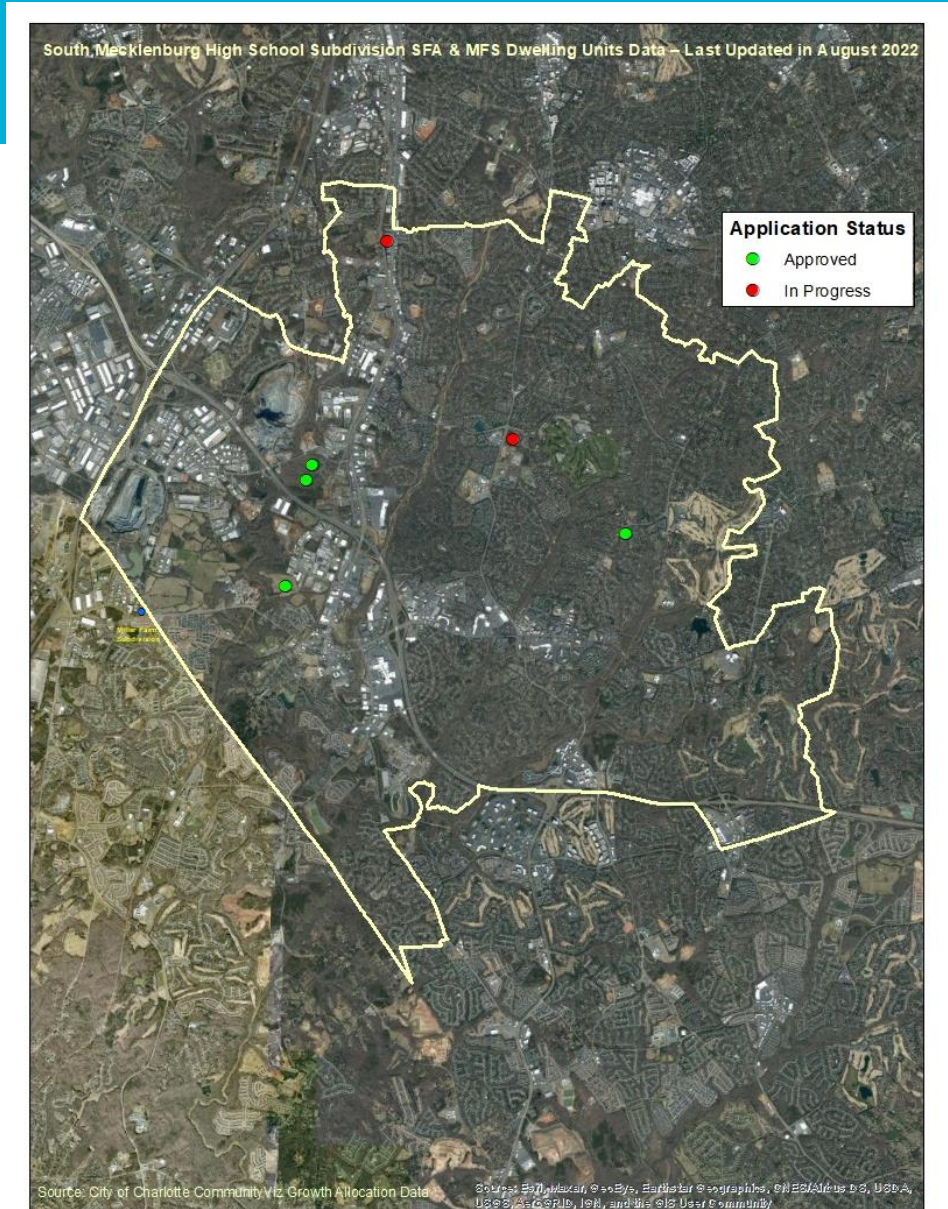
Phase 3 (would require new Traffic Impact Study and major transportation event)

	1030 multi-family units	1050 multi-family units	300 single-family attached units	1890 multi-family units
Estimated total student yield	355	361	103	651
Estimated elementary student yield	203	207	59	373
Estimated middle school student yield	75	77	22	139
Estimated high school student yield	75	77	22	139

South Mecklenburg High School Subdivision Data –

Last Updated in August 2022

	352 single-family attached	344 multi-family units
Estimated total student yield	117	118
Estimated elementary student yield	54	68
Estimated middle school student yield	22	25
Estimated high school student yield	41	25



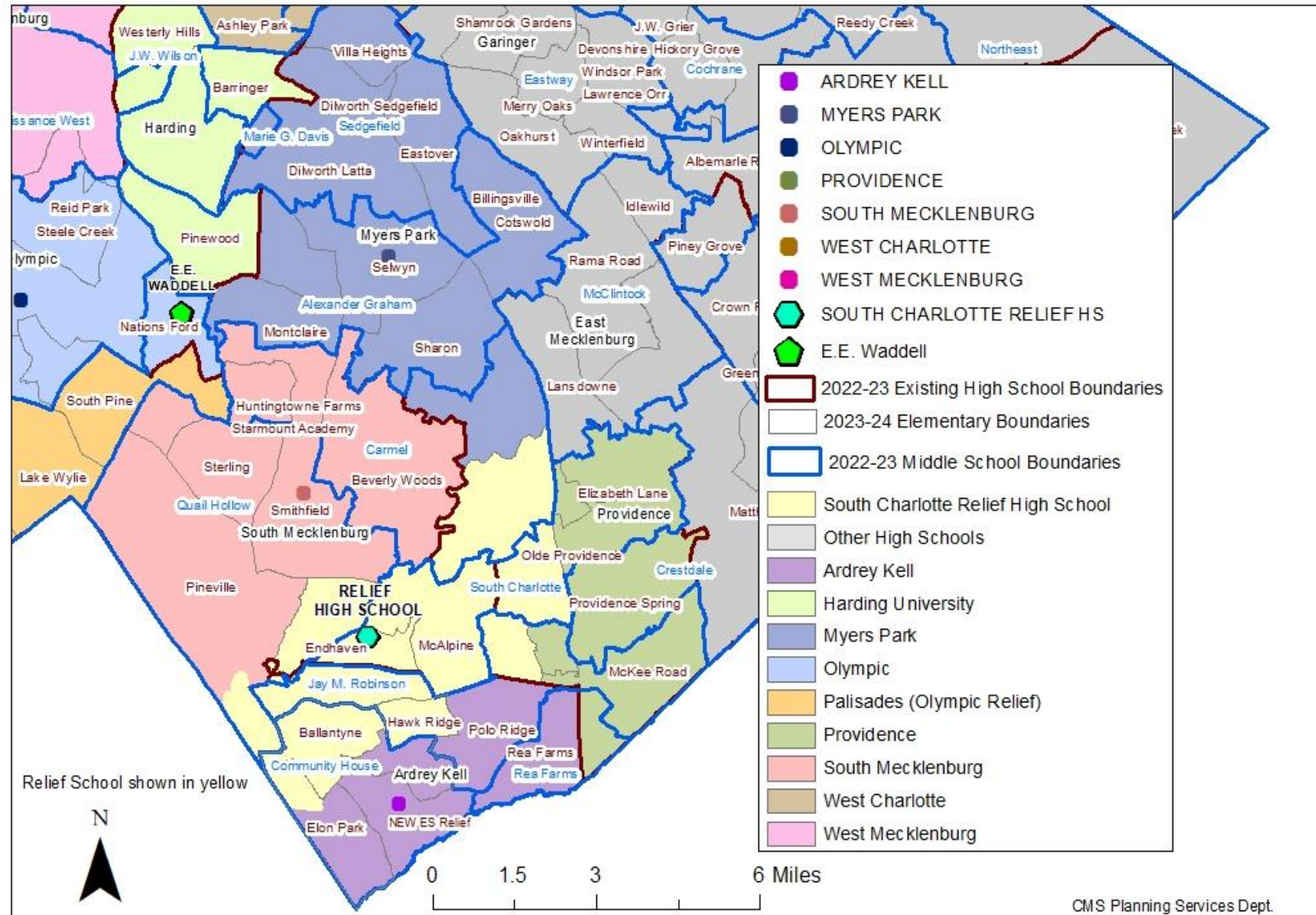
Source: City of Charlotte Subdivision Data

Next Steps

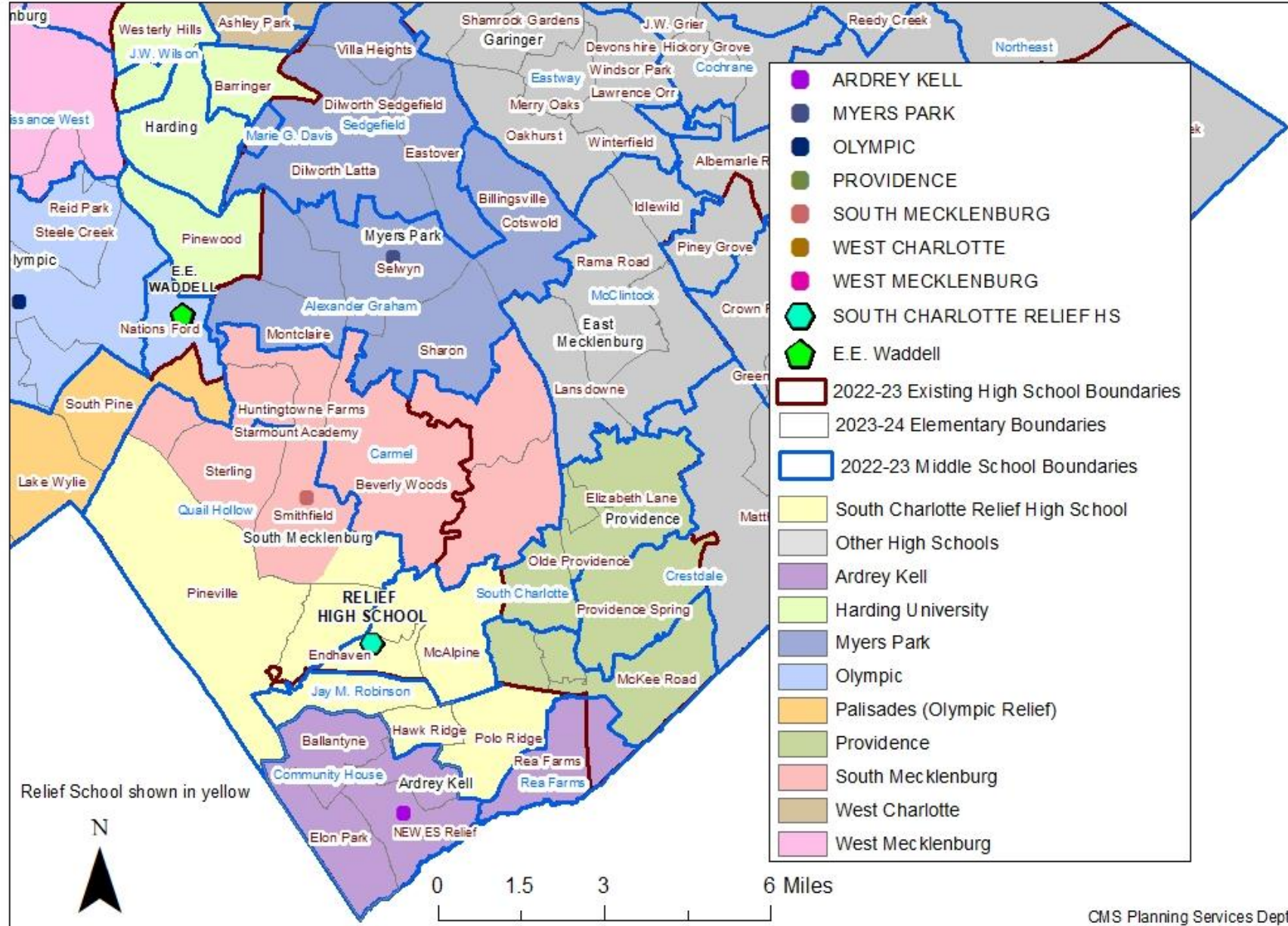
- Please help us down to around 3 scenarios to present publicly with data on each of the four Board priorities using this response form (responses due Tuesday, Nov 29): <https://forms.gle/6BhaE9H2sP6stm2b6>.
- The public survey will be posted on the [CMS Planning site](#) and shared with each of the schools in the impacted area the week after Thanksgiving.
- Ongoing: small group conversations with parents, CMS staff and students to provide information, collect feedback, and answer questions – please reach out to the Planning Director to schedule (claire1.schuch@cms.k12.nc.us).
- Best practices interviews with leaders in CMS and other districts who have recently opened new high schools.
- There will be a large public session early January (exact date and location TBD, will be in-person) to share updated scenarios based on the feedback received.

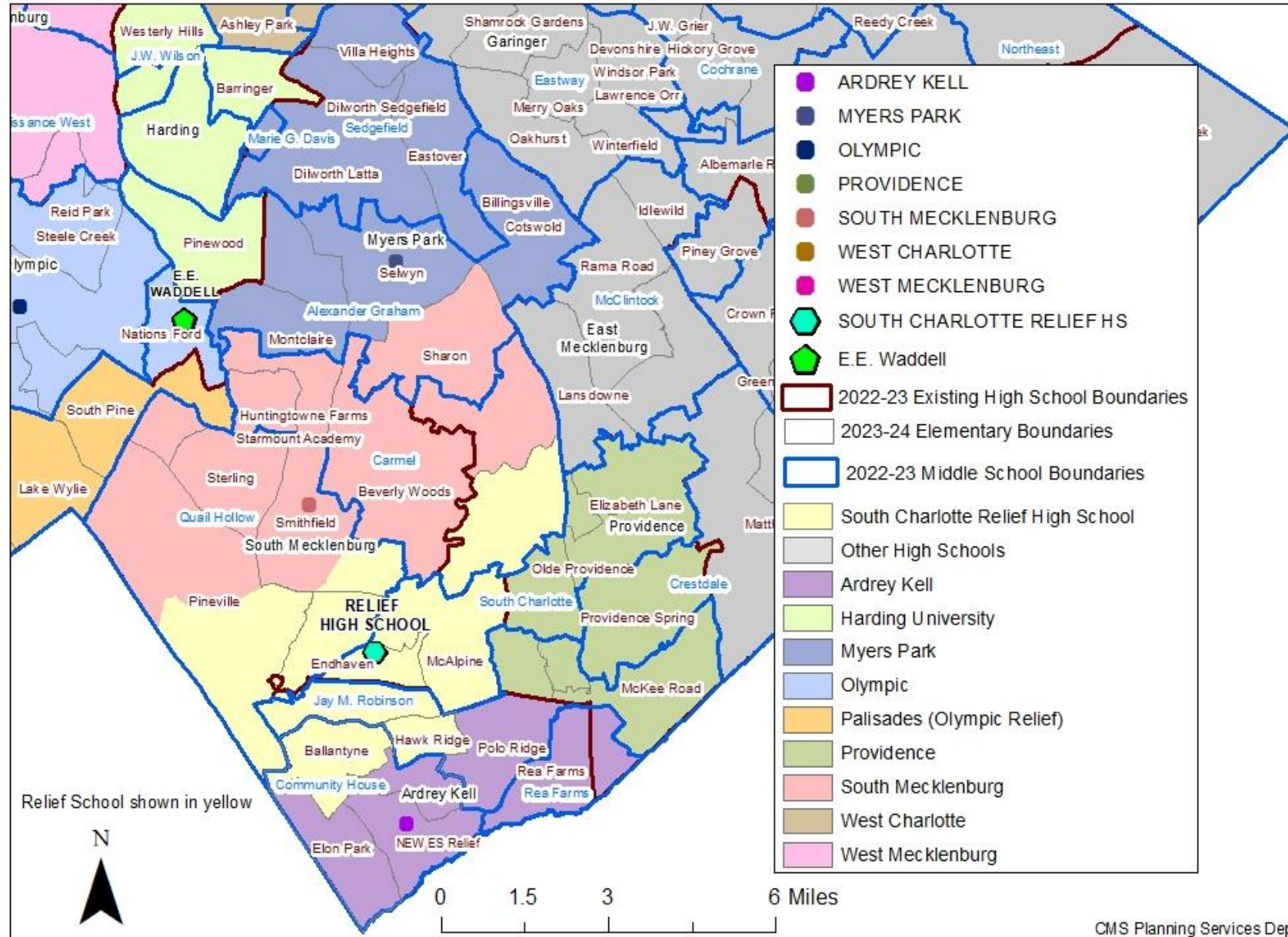
Previous Scenarios – with updated capacity utilization estimates

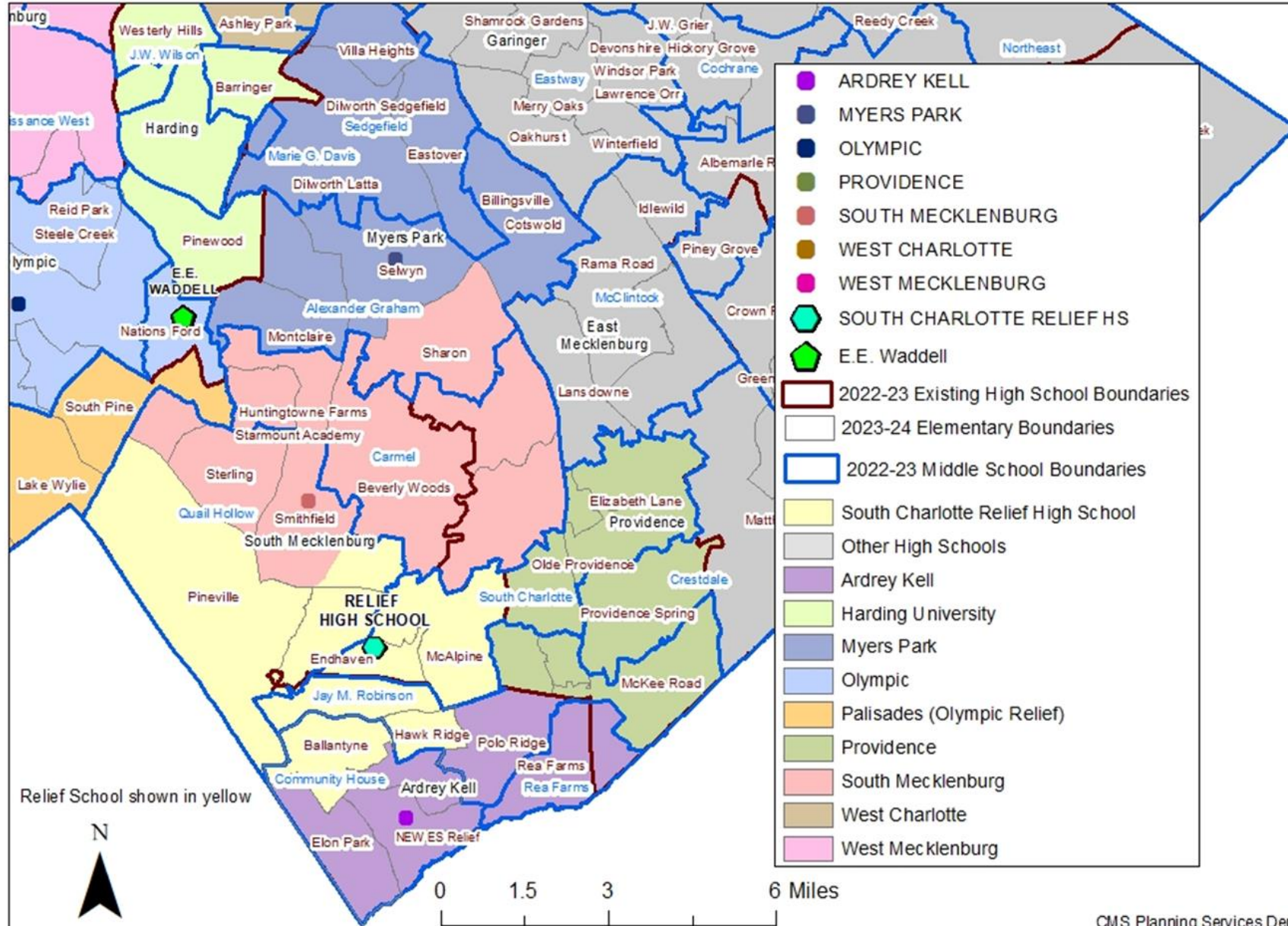
South Charlotte Relief HS - Blue Scenario



- ARDREY KELL
- MYERS PARK
- OLYMPIC
- PROVIDENCE
- SOUTH MECKLENBURG
- WEST CHARLOTTE
- WEST MECKLENBURG
- SOUTH CHARLOTTE RELIEF HS
- E.E. Waddell
- 2022-23 Existing High School Boundaries
- 2023-24 Elementary Boundaries
- 2022-23 Middle School Boundaries
- South Charlotte Relief High School
- Other High Schools
- Ardrey Kell
- Harding University
- Myers Park
- Olympic
- Palisades (Olympic Relief)
- Providence
- South Mecklenburg
- West Charlotte
- West Mecklenburg







Scenario Comparison Utilization

Estimated Enrollment and Utilization (Y2)										
School	Estimated student capacity*	2022-2023 20th Day Enrollment	BLUE Scenario Estimated Enrollment (Y2)	BLUE Scenario Estimated Utilization (Y2)	ORANGE Scenario Estimated Enrollment (Y2)	ORANGE Scenario Estimated Utilization (Y2)	YELLOW Scenario Estimated Enrollment (Y2)	YELLOW Scenario Estimated Utilization (Y2)	VIOLET Scenario Estimated Enrollment (Y2)	VIOLET Scenario Estimated Utilization (Y2)
Ardrey Kell	2500	3543	2327	93%	2540	102%	2623	105%	2623	105%
Myers Park	3000	3615	3255	109%	3037	101%	2692	90%	2692	90%
Providence	2200	2061	1752	80%	2015	92%	2015	92%	2015	92%
South Mecklenburg	2700	3366	2781	103%	2803	104%	2834	105%	3148	117%
New HS	2500	N/A	2457	98%	2178	87%	2409	96%	2095	84%

*This estimate is based on various factors such as the number of available/anticipated classrooms, staff allotments, resources, school management, and district standards. This is adjusted from the original estimates shared to more closely reflect the environments at the schools. The Board's goal is to move towards 100-classroom, 2500 student high schools.

Scenario Comparison SES & Feeders

Socioeconomic Status

School	CURRENT			BLUE			ORANGE			YELLOW			VIOLET		
	HIGH	MID	LOW	HIGH	MID	LOW	HIGH	MID	LOW	HIGH	MID	LOW	HIGH	MID	LOW
Ardrey Kell	78%	21%	1%	81%	19%	0%	73%	25%	2%	83%	17%	0%	83%	17%	0%
Myers Park	56%	25%	19%	53%	26%	21%	50%	28%	22%	49%	26%	25%	49%	26%	25%
Providence	79%	21%	0%	77%	23%	0%	78%	22%	0%	78%	22%	0%	78%	22%	0%
South Mecklenburg	30%	23%	47%	29%	14%	57%	48%	10%	42%	44%	14%	42%	49%	15%	36%
New HS	-	-	-	66%	30%	4%	55%	27%	17%	47%	35%	18%	42%	37%	20%
Impact Area Average	61%	23%	17%												
District Average	27%	36%	38%												

Feeder Patterns (incl. Providence)

Current Feeder Pattern Summary			Result (+)	BLUE	ORANGE	YELLOW	VIOLET
ES to MS to HS	43	Total feeder patterns	Decrease	44	42	43	42
MS to HS	17	Total feeder patterns from MS to HS	Decrease	21	16	20	19
Intact ES to MS to HS	19	Total intact feeder patterns	Increase	18	20	18	19
Intact MS to HS	3	Total intact feeder patterns from MS to HS	Increase	1	4	2	3

Scenario Comparison

Home to School Distance

Average travel distance (miles)					
	Current	Blue	Orange	Yellow	Violet
Ardrey Kell	2.5	*	2.2	2.3	2.3
Myers Park	3.7	*	3.4	3.5	3.5
Providence	3.7	*	3.3	3.3	3.3
South Meck	3.4	*	3.6	3.3	3.7
New HS	-	*	3.6	3.6	3.2

* Not calculated